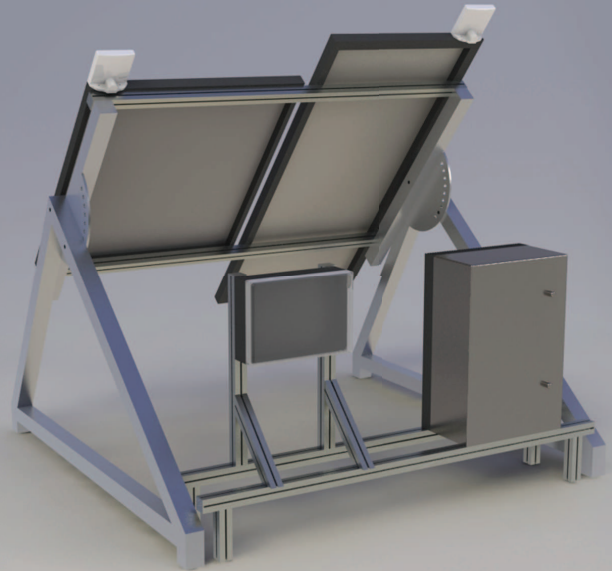
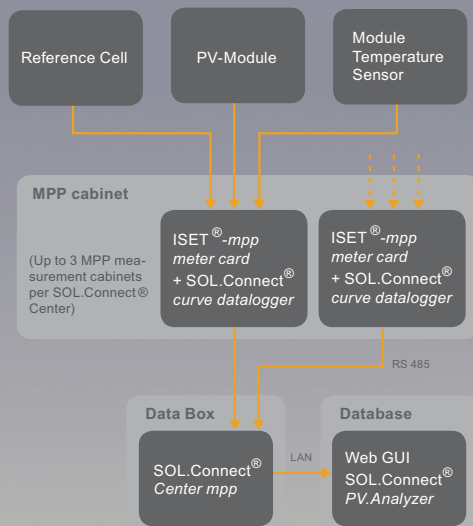


The SOL.Connect[®] meter mpp for measurement and comparison of PV modules under open field conditions



23.05.2009

Product Features

- > Measure any number of PV modules simultaneously
- > Realistic operating conditions (PV modules held in MPP between curve measurements)
- > Modular, weather-resistant construction, simple and easy to expand
- > Use of an electronic load – no falsifying influence from AC converters or public grid feedback
- > Automatic data transmission to a database (online portal or customer's own server)
- > Software SOL.Connect[®] PV.Analyzer for targeted selection, filtering, and comparison of measurement data using a Web GUI with no programming required

Optional Products and Services

- > Turnkey planning and installation
- > Integration of additional measurement technology such as webcam or weather station
- > Scientific evaluation and analysis of the measurement data
- > Generation of performance reports
- > Determination of module parameters for the simulation environment from the measurement data
- > Operation of the measurement system

The ISET[®]-mpp meter card was developed by the ISET Kassel e. V.

Technical Data:

P_{max}: 150 W¹, 220 W¹, 400 W¹

V_{max}: 253 V (350V)

I_{max}: 2,5 ... 20 A (depending on the model)

Measurement resolution (V, I): 16 Bit

Measurement points per curve: up to 256

Measurement inaccuracy : < 1% f. MR

Measurement cycle: 1 min for complete

V/I curve, 10 sec. for curve values and

weather data

Ambient temperature: -10° C ... +40° C

Curve measurement time: 0,1 ... 3 sec.

Modes of operation: MPP; ISC; VOC

Temperature measurement: PT1000

(for P_{max}, higher power is possible for a short time)

BEC-Engineering GmbH – As a network partner of Papendorf Software Engineering GmbH we will advise you individually and deliver a system suited to your requirements. We can perform all necessary tasks from planning to handover of a turnkey system. Additional solutions such as meteorological measurement systems or an autonomous power supply can be integrated with no problem. We are an independent engineering office with many years of experience in providing expert advice and publishing scientific papers. This qualifies us uniquely to manage your operations, perform scientific evaluation of measurement data or generate performance reports for you.